




Electronic Farm Management Toolbox for Climate Resilience (EMTC)

 Schweizerische Eidgenossenschaft
Confédération suisse
Confederazione Svizzera
Confederaziun svizra

Swiss Agency for Development and Cooperation SDC
Agenția Elvețiană pentru Dezvoltare și Cooperare
Швейцарское управление по развитию и сотрудничеству



STE DSIK Moldova
Trimetrica Ltd

Content

1. EMTC Tool Modules
2. Main Stakeholders
3. Benefits
4. Tools for the farmers
5. Elements for 'precision agriculture'
6. Available data sets for better farming
7. Questions and discussion

1. Farmers' module
2. Agricultural geo-maps module for state institutions
3. Financial sector related module
4. Insurance related module
5. Apps for scientific institutions in the agro-sector

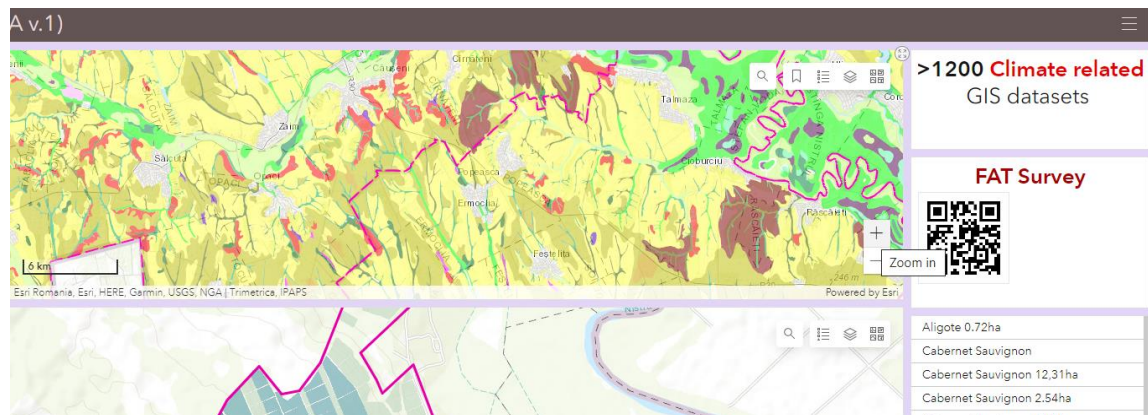
EMTC Tool Modules & Applications

1. Advanced Farmers and Agricultural businesses
2. Governmental institutions
3. Banks, non-banking financial institutions
4. Insurance companies and brokers
5. Scientific institutions in the agricultural sector
6. Local and regional governments

Main Stakeholders

Benefits

1. Reduce the cost of inputs for farmers (fertilizers, herbicides, etc)
2. Optimise the seeding process for better yield
3. Increase the yield per hectar for various crops
4. Provide the data for better funding opportunities
5. Provide the tools for better monitoring of risks
6. Ensure the reliable statistics for macro-level planning and forecasting
7. Ensure the compliance with the EU regulations in the agricultural area
8. Provide the tools for more efficient subsidies programs



Name of the company

Address of the company
Enter Raion/Locality

Email

Crop*

☐ Porumb

☐ Floarea Soarelui

☐ Grâu de iarnă

☐ Orz

Enter your field contour on the map using Satellite imagery*

Cerere de seminte in kg/ha

Greutatea reală a unei mii de semințe în gr.

Rata reală de germinare în %.

Tinta plante pe mp
introduceti 150,sau 200 sau 250 pana la 550

Fertilizer, active matters/kg

N
Introduceti % from Fertilizer's certificate

P

K

Mg

Ca

Tools for the farmers:

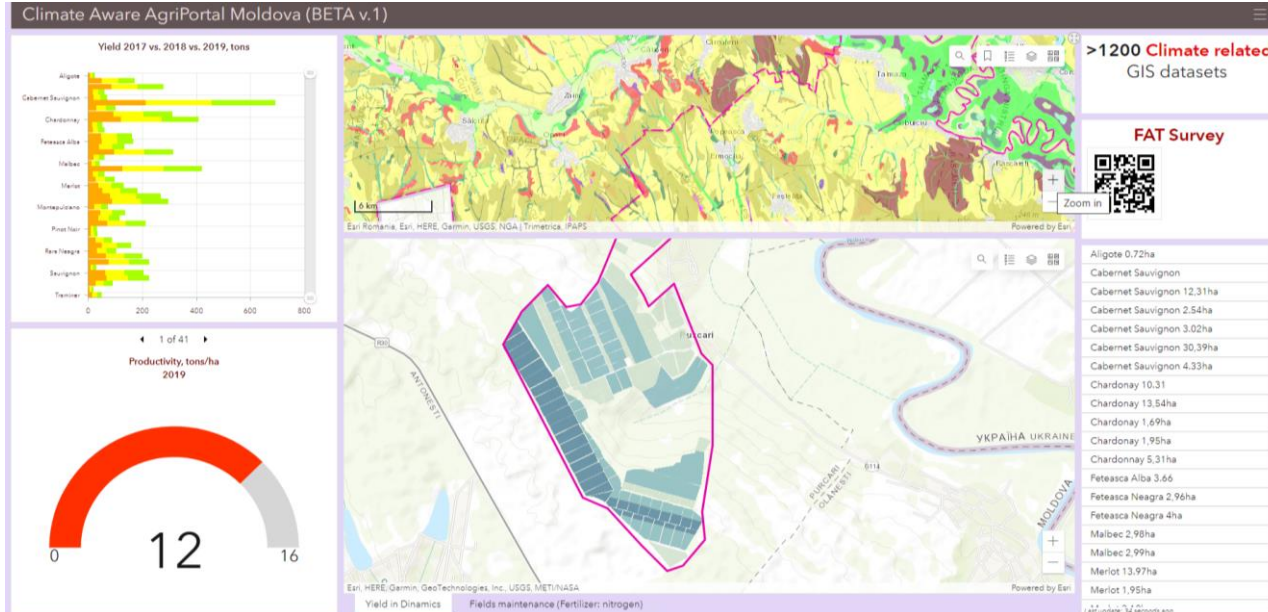
1. Survey for their field data inputs for seeding optimization for better yield results
2. Formulas for fertilizers optimization

Agri fields Maintenance (Fertilizer input)



Tools for the farmers:

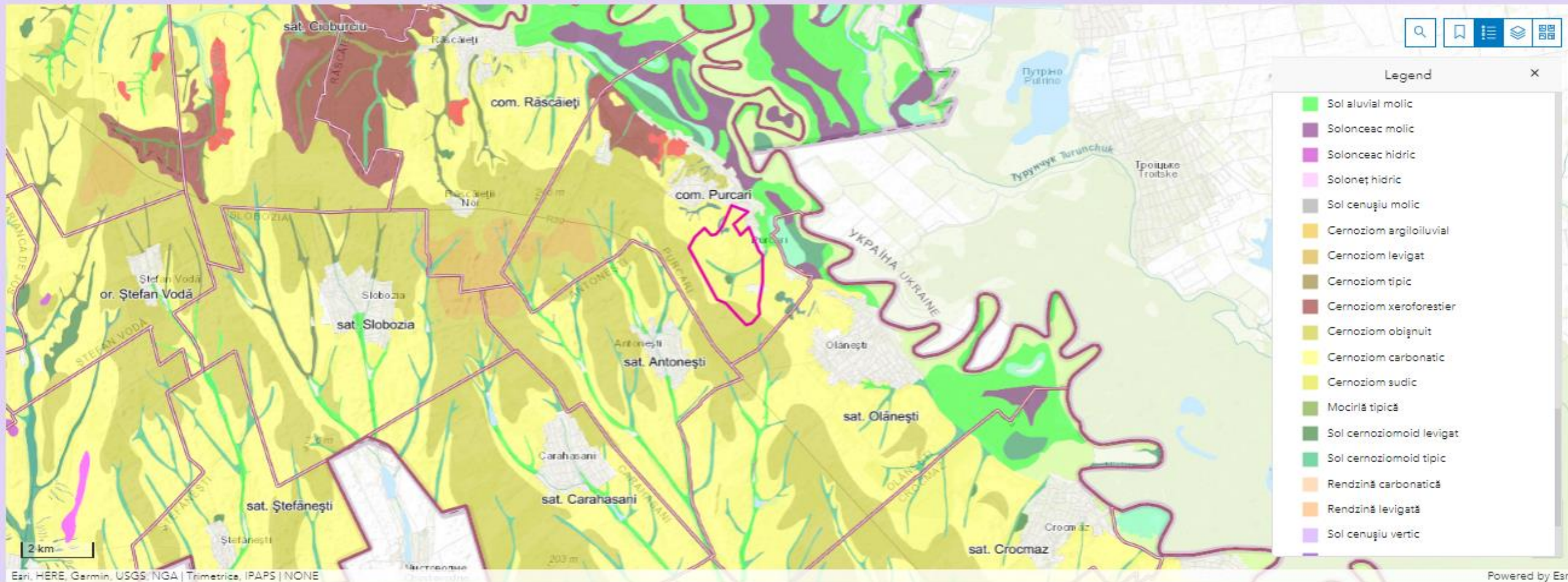
1. Survey for their field data inputs for seeding optimization for better yield results
2. Formulas for fertilizers optimization



Elements for the precision agriculture

1. Map of soil types in Moldova

Climate Aware AgriPortal Moldova (BETA v.1)



Elements for the precision agriculture

2. NDVI Index of Moldova

Climate Aware AgriPortal Moldova (BETA v.1)

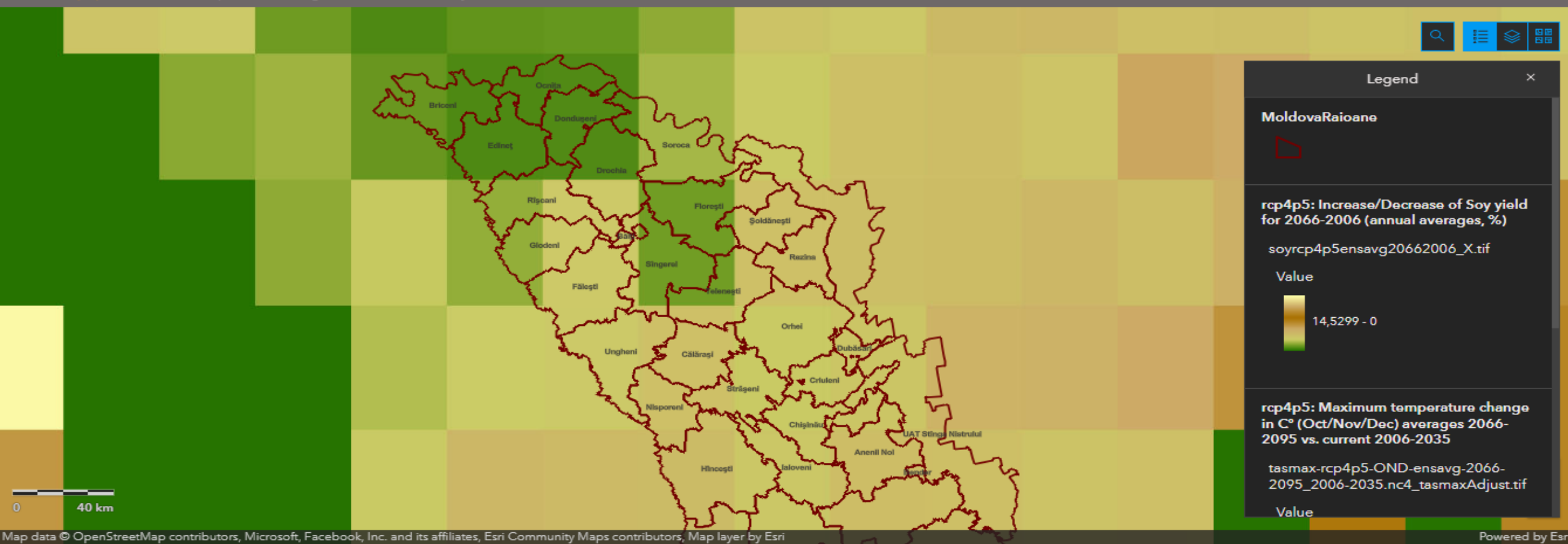


Data sets for better farming (Climate change scenarios. Example of Soy)

Agriculture Atlas (beta v. 1.2) of Moldova in the context of Climate Change

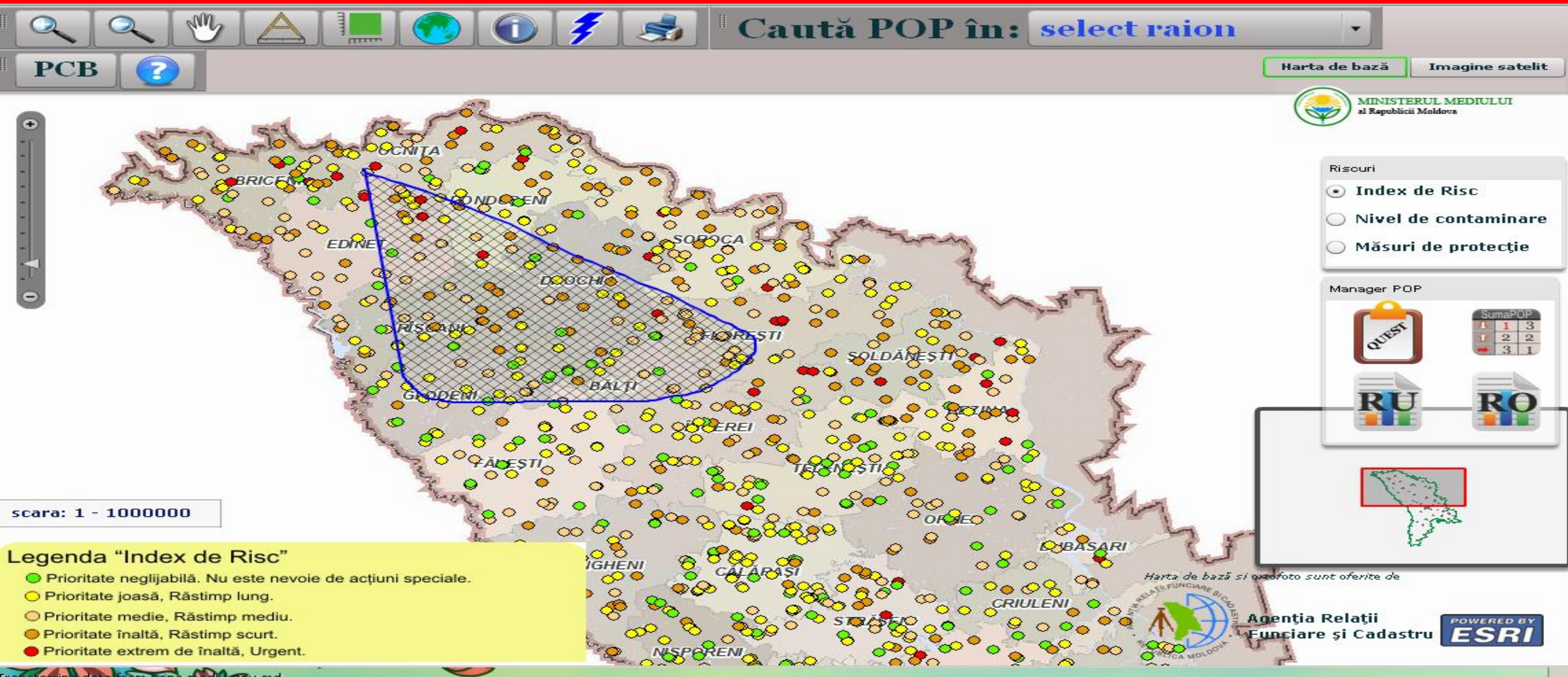
scenarios rcp4p5 vs. rcp8p5

Scenariu **rcp4p5**: Maximum temperature change + Wheat Yield + Soy Yield



Data sets for better farming

Map of Persistent Organic Pollutants (POPs)



Data sets for better farming

Potential Partner Organizations



Serviciul Hidrometeorologic de Stat



Danke !
Thank you !



str. Alexandru cel Bun 144/1, Chisinau, MD 2004
Republic of Moldova

Phone: +373 22 830 777

Fax: +373 22 830 776

Mob: +373 69 316 633

wulf.schmieder@sparkassenstiftung.de
anatolie.ignat@gmail.com

www.sparkassenstiftung.de

Visit us:

